

Town Meeting Article 20

The Lynnfield Library Building Project

***Monday, April 25, 2016 @ 7:30 p.m.
Lynnfield Middle School Auditorium***

***Town of Lynnfield
Lynnfield Public Library
William Rawn Associates, Architects
Design Technique, Inc., Owners Project Manager***

www.lynnfieldlibrary.org/library-building-project/

Our Library, Our Future: Information, Connections & Community

The Massachusetts Board of Library Commissioners requires

- *Town Meeting approval to submit a public library construction grant request*
- *Preliminary site plan and schematic design approval*

**NO COST TO THE TAXPAYER TO APPLY FOR THE
STATE GRANT**

Our Library, Our Future: Information, Connections & Community

FRONT AND ON STREET PARKING



- ***Limited, tight street parking and only “designated” handicap parking spaces***
- ***Per State guidelines, our library would require 36 off street parking spaces.***
 - ***Only 8 spaces are available in the rear***
- ***Overflow and staff parking available in Town Hall parking lot:***
 - ***Across 2 dangerous streets***
 - ***Stop signs in one direction only***

Our Library, Our Future: Information, Connections & Community

BUILDING ACCESS



- ***Only public entrance consists of two sets of double doors - neither is automated***
- ***Patrons in wheelchairs and caregivers with children in strollers - struggle to get inside***
- ***During heavy rain, parking lot can overflow and water flows down the emergency exit stairs and under the door into the basement***

Our Library, Our Future: Information, Connections & Community

FICTION AREA DURING BASEMENT FLOODING



- ***Severe rainstorms cause parking lot and stream to flood, water pours down emergency exit into the basement***
- ***Cleanup/testing for mold closed basement over month in 2014 eliminating access to fiction, newspaper back issues and Friends Book Sale / Mechanical Rooms***

Our Library, Our Future: Information, Connections & Community

PERSISTENT DEFICIENCIES



- ***Lights on either side of ceiling fans permanently off due to strobe effect when lit***
- ***DPW does not replace lights until a sufficient number have burned out***
- ***Large number of burnt out lights make parts of the room feel dark and gloomy***
- ***Severe weather causes major water leaks throughout the building - Youth Services, Genealogy, Circulation Desk area and Technical Services***

Our Library, Our Future: Information, Connections & Community

MAIN READING ROOM



- ***Barrel vaulted ceiling in Reading Room/Mezzanine creates untenable acoustics throughout building***
- ***Intensified noise levels during small programs and meetings held on mezzanine***
- ***No designated quiet areas for studying or reading; fully used by teens and tutors during after school hours***
- ***Palladian window light becomes blinding, creating glare when the sun is high***

Our Library, Our Future: Information, Connections & Community

MEETING SPACE



- ***Folding partition screen blocks (some) noise from rest of building***
- ***All tables and chairs must be rearranged before and after each program***
- ***Nonfiction collection largely inaccessible to patrons during programs***

Our Library, Our Future: Information, Connections & Community

TODDLERS AND CHILDREN



- *Lack of designated program space causes programs to be held amidst collections and no places for caregivers and children to sit together*
- *Limited seating; caregivers forced to stand while children participate*
- *During programs access and use of the collections are limited*
- *Need to shelve books higher than a small child can reach*

YOUNG ADULT AND TEEN SPACE



- *Young Adult space virtually non-existent, noisy and unable to accommodate 20+ middle school students who regularly visit after school squeezing out others*
- *When a program is running, collections become completely inaccessible*
- *Limited shelving for collections and unreachable top shelf also used*
- *No space is available for teen computers*

Our Library, Our Future: Information, Connections & Community

SITTING AREAS FOR ADULTS AND TEENS



- ***Internet stations also double for reading when not in use***
- ***IT / wiring setup is hodgepodge and wires easily disconnected by patrons' feet***
- ***Minimal Wi-Fi bandwidth and outlets. Patrons bring laptops and use mezzanine for hours at a time restricting use by others***

Our Library, Our Future: Information, Connections & Community

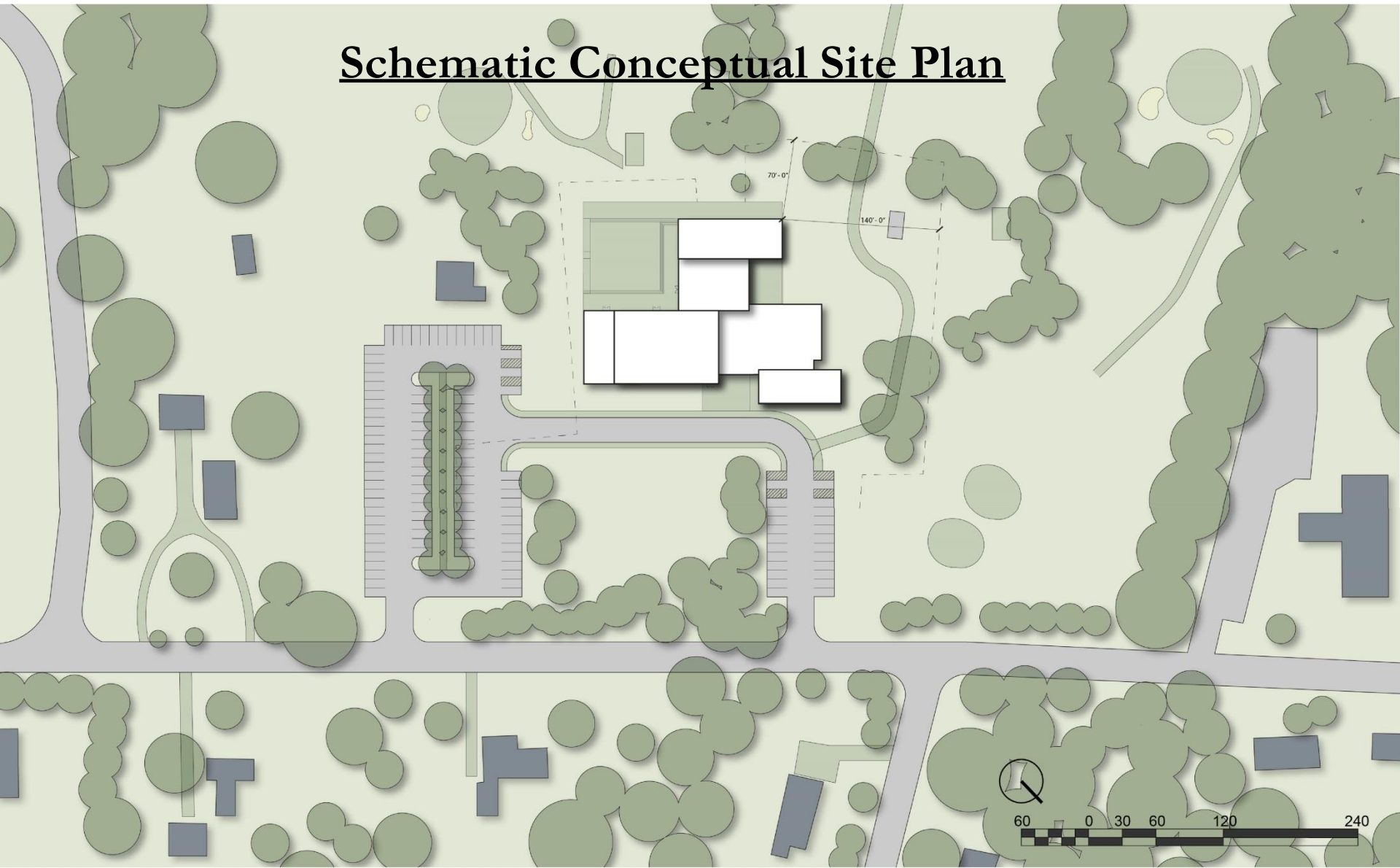
THE NEXT 20 YEARS - A 21ST CENTURY LYNNFIELD LIBRARY ...

- *Is a safe and accessible community facility that supports information, connections & community.*
- *Will architecturally reflect the rich heritage of Lynnfield.*
- *Is dynamic and flexible while able to adapt to evolving technologies.*
- *Supports literacy for all ages through a diverse collection and innovative programming.*
- *Is an educational center, providing spaces and resources for collaborative learning and cultural events.*
- *Provides dynamic spaces for connecting with friends, neighbors and classmates and open to community at all hours (not just Library hours).*
- *Is a vibrant 21st Century Library to support education, life long learning, and our quality of life in our information economy for our 21st Century residents and staff.*

Our Library, Our Future: Information, Connections & Community

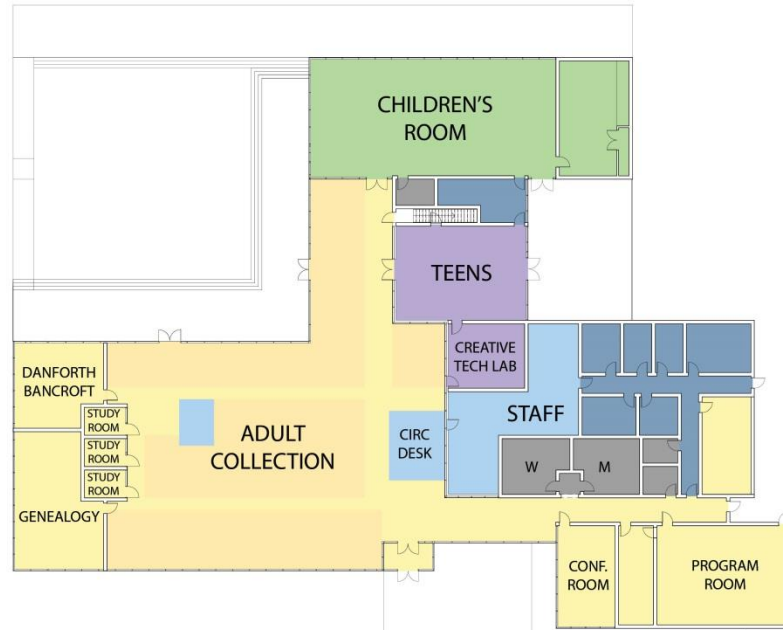
SITE PLAN

Schematic Conceptual Site Plan



FLOOR PLAN

Schematic Conceptual Floor Plan



VOTE YES

Our Library, Our Future: Information, Connections & Community